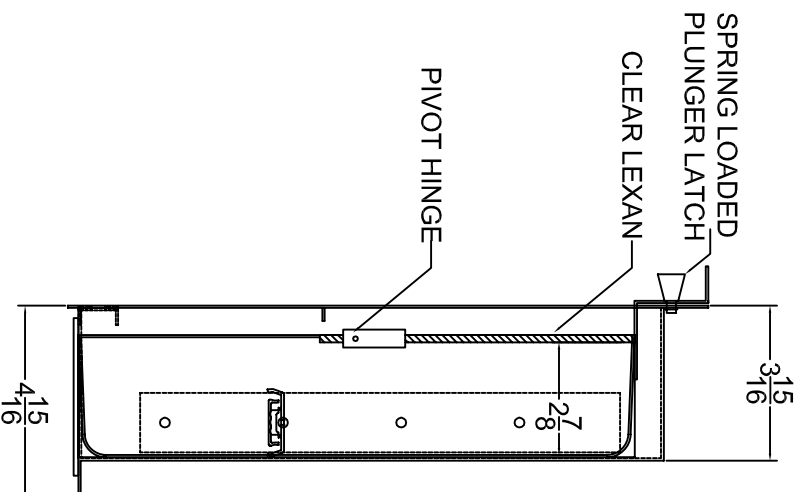
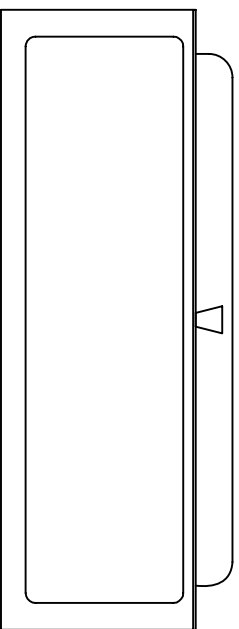
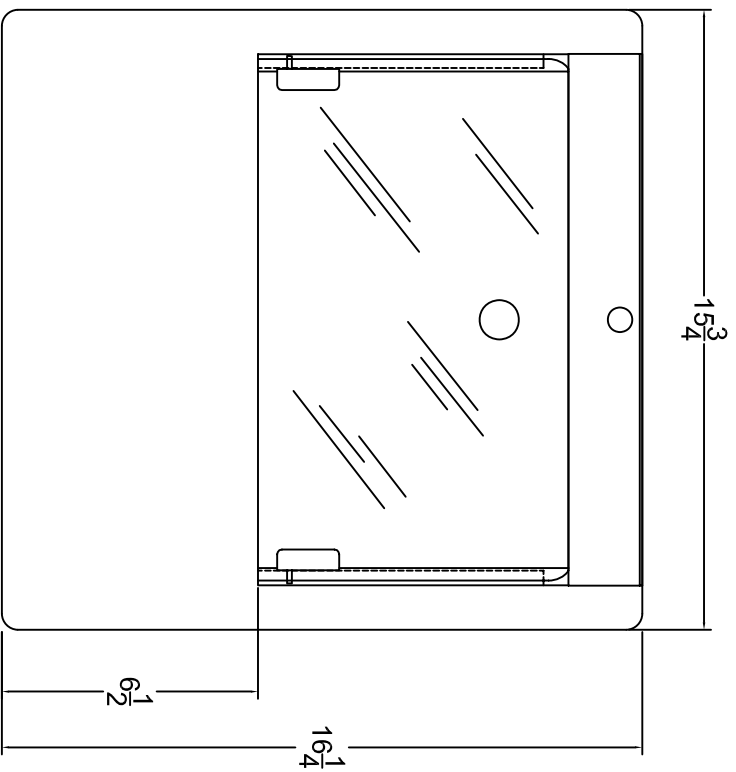
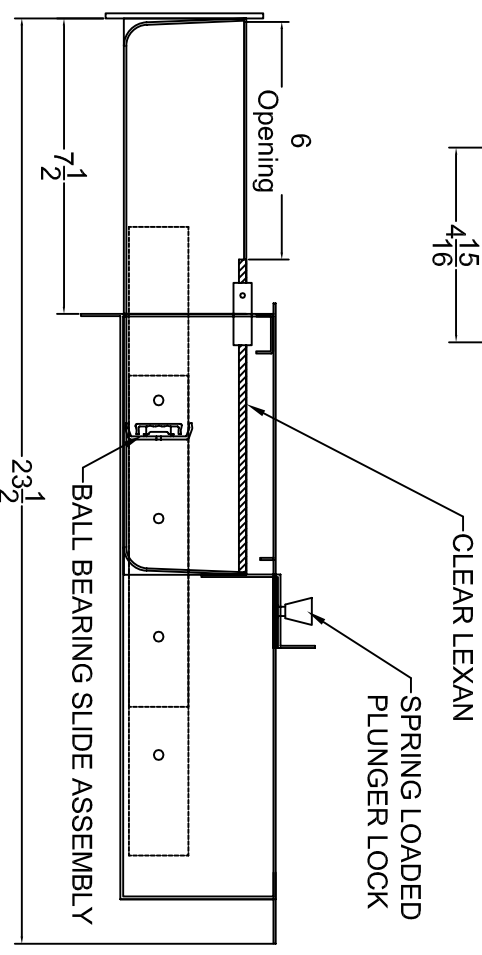


# Brushed Stainless Steel Deal Drawer DD1616



**DD1616** Stainless Steel Deal Drawer is built to be recessed in the counter top along the front edge to achieve a flush appearance. Glazing above the flat hoodbonnet portion provides a barrier that doesn't obstruct operation of drawer. A full width handle across the rear of the drawer pushes it smoothly along ball bearing glides for easy operation.

Lexan lid will not open when drawer is extended. Drawer unit has stainless steel construction. Complete unit is fully assembled and ready for installation.



**Fully Opened Position**